

BEAUTIFUL ARCHITECT-DESIGN 2 BED FLAT IN NEW-BUILT DEVELOPMENT



The apartment is in a quiet and residential district bordering Horta and La Guineueta. The surrounding: Nou Barris Central Park, the Laberint d'Horta Historical Park, as well as the adjacent green spaces of Collserola, reinforce the green character of this residential development under construction. The area offers a variety of services and shops in the historic part of Horta's old town as well as in the shopping centers of Fabra i Puig and Valldaura. The residential area is well connected both with the city center (Rovira tunnel) and with its surroundings (Ronda de Dalt). Highlights include the Mundet University Campus, Horta Velodrome, Olympic Tennis Facilities and cultural facilities such as the reconstructed Republic Pavilion. The property is in a detached residential building in...

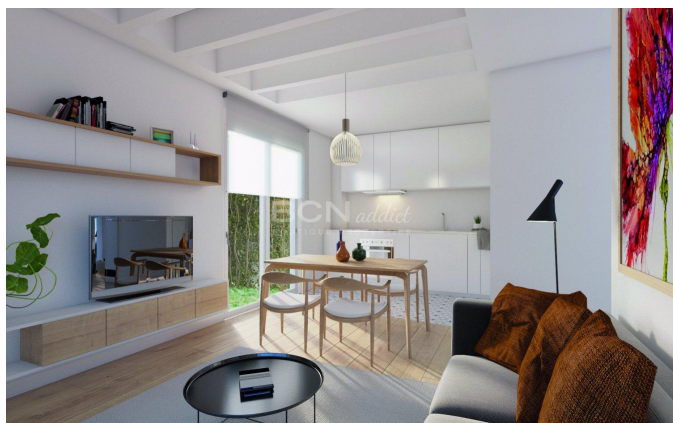
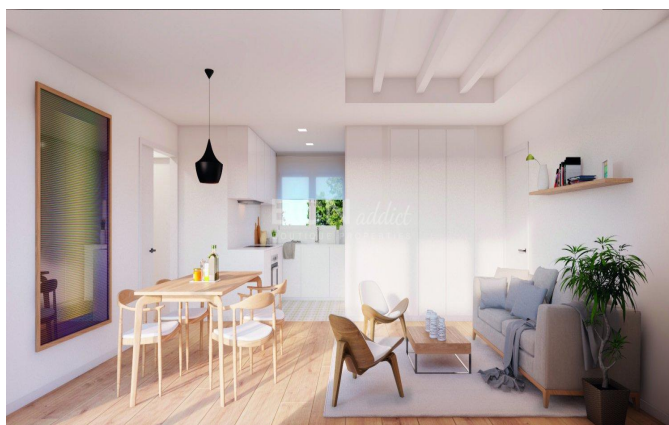
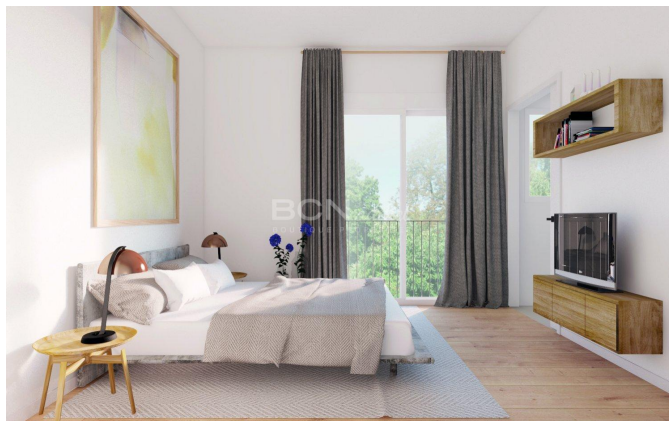
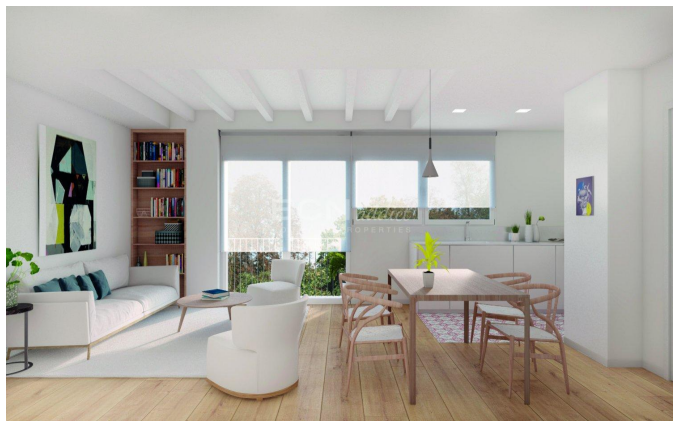
2 Rooms · 66 m² · 500 000 €

REF:	Z-2073
Year of construction	2019
Bedrooms	2
Toilettes	1
Heating	Heat Pump
Condition	Excellent
Floor Type	Mix Wooden - Original
Ceiling Type	Mouldings

Equipments

Air Conditionning - Fitted Wardrobes - Elevator - Heating - Built-In Kitchen - Automation - Exterior - Garage - Parking - Placa Fotovoltaica - Basement - Trastero - City Views

REF: Z-2073



Planta 1-1
66 m² - Superficie construida
 Comedor-salón-cocina
 2 habitaciones
 1 baño

Planta 2-1
66 m² - Superficie construida
 Comedor-salón-cocina
 2 habitaciones
 1 baño

Tabla de superficies	
Salón comedor / Cocina	28,22 m ²
Hab. matrimonio	11,36 m ²
Hab. doble	11,63 m ²
Baño	3,50 m ²
Distribuidor	1,94 m ²
Total sup. útil	56,65 m ²
Superficie construida	65,32 m ²



Amit Brown, Tf: +34 656 95 85 49
 hola@bcnaddict.com
 BCNaddict, C/ Blasco de Garay 26, Local 1 08004 Barcelona

BCN
addict
 BOUTIQUE PROPERTIES