

## PENTHOUSE IN THE HEART OF POBLE SEC



This New Development is located in the heart of Poble Sec, just a 2-minute walk from the Poble Sec metro station. The neighborhood, situated steps from Avinguda del Paral·lel, has become one of Barcelona's trendiest areas. Known for its vibrant culinary scene and rich cultural offerings, it boasts more than five Michelin-starred restaurants. This energy-efficient A-rated building features a ground floor plus two additional levels, offering 1-, 2-, and 3-bedroom apartments, each with spacious terraces or private gardens. The ground floor includes two duplex residences with private gardens of over 60 m². The first and second floors each house three apartments, each with an exclusive rooftop terrace of approximately 25 m², perfect for enjoying Barcelona's exceptional climate. A rare...

### **2 Rooms · 59 m² · 475 000 €**

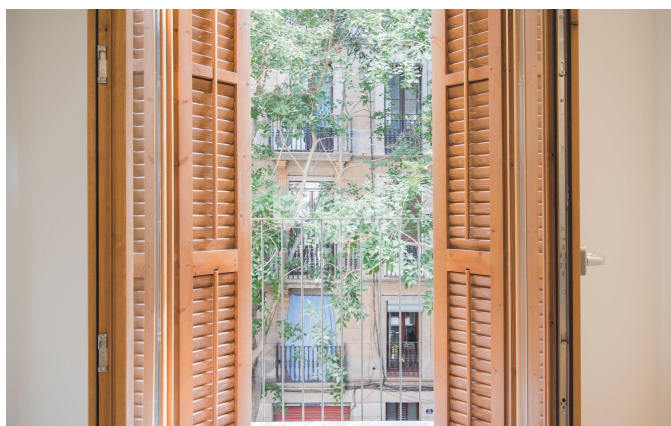
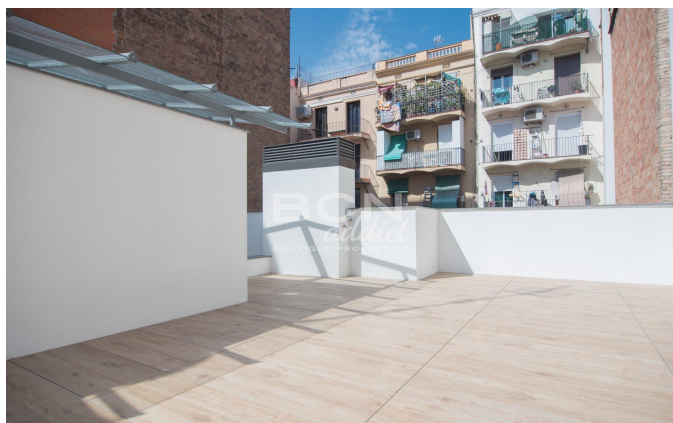
REF:	Z-2080
Year of construction	2018
Bedrooms	2
Toilettes	1
Terrace sqm	27
Heating	Heat Pump
Condition	Excellent
Floor Type	Parquet

### **Equipments**

Air Conditionning - Elevator - Balcony - Heating - Built-In Kitchen - Automation - Patio - Terrace



REF: Z-2080



Amit Brown, Tf: +34 656 95 85 49  
hola@bcnaddict.com  
BCNaddict, C/ Blasco de Garay 26, Local 1 08004 Barcelona

**BCN**  
*addict*  
BOUTIQUE PROPERTIES