

IMPRESSIVE STYLISH APARTMENT IN NOBLE BUILDING



The property is ideally located in the Borne district of Barcelona, in a charming semi-pedestrian street off Passeig del Borne and Passeig Picasso, opposite to train station Estación de Francia and moments from Santa Maria del Mar church and Ciutadella Park. The flat is set in a beautiful period building of 1866 with lift. The property is close to trendy boutiques, local restaurants, bars and famous sightseeing places. The apartment is also in the vicinity of public transport: buses, commuter trains and several metro lines such as L4 Barceloneta. There are underground parking options for 150-200€/month in the vicinity. The property of 114 m2 built is on the first floor of a 5 storey-building. The beautiful façade of the building offers well preserved moldings, round arched...

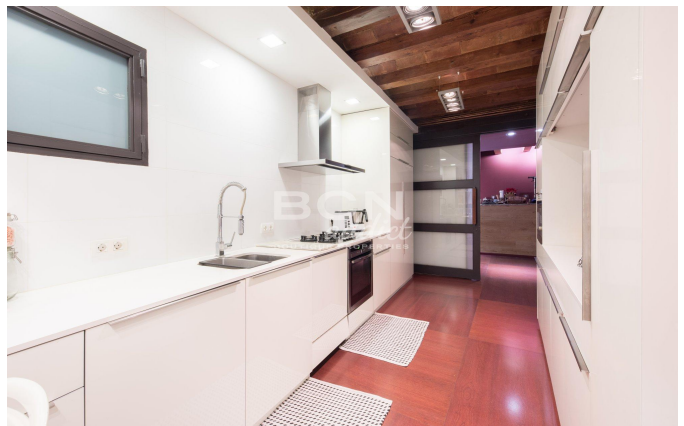
2 Rooms • 118 m² • 630 000 €

REF:	R-531
Year of construction	1866
Bedrooms	2
Toilettes	1
Heating	Gas
Condition	Excellent
Floor Type	Parquet
Ceiling Type	Original ceiling

Equipments

Air Conditionning - Elevator - Heating - Patio

REF: R-531



Amit Brown, Tf: +34 656 95 85 49
hola@bcnaddict.com
BCNaddict, C/ Blasco de Garay 26, Local 1 08004 Barcelona

BCN
addict
BOUTIQUE PROPERTIES