

SPACIOUS DESIGNER APARTMENT IN AN EXCLUSIVE DISTRICT



Located in the neighbourhood of Sant Gervasi – Galvany, the building is a reflection of this upper-class district. Today, it has conserved its original character, now completed by a lively nightlife and great variety of restaurants. An exclusive building with only few owners was built in the 1930s, replacing the famous casa Llorach. Designed by Rubió i Tudurí, one of the most renowned Barcelona's architects, it distinguishes with its rationalist style. Forming part of old Isabel Llorach's residence, the apartment is located on the 4th floor, sharing it only with one property more. A small lobby leads from the elevator to both apartments. Vast, long corridor forms the entrance area of this property and is decorated with faux windows that give the apartment modern, loft vibe....

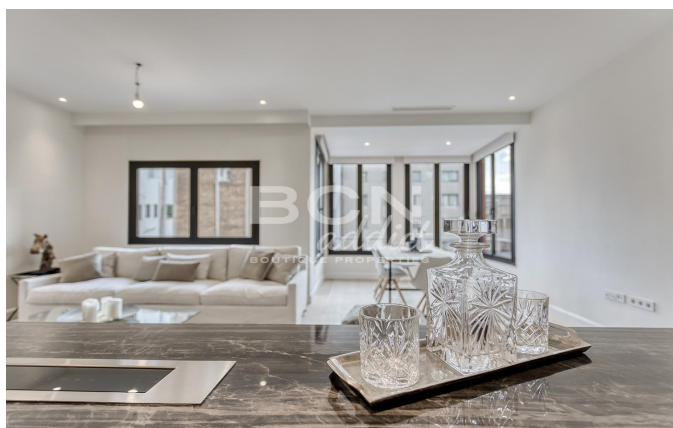
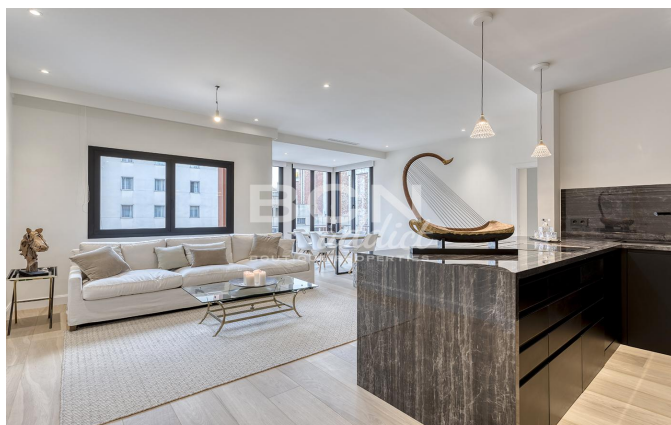
2 Rooms · 102 m² · 615 000 €

| | |
|----------------------|-----------|
| REF: | Z-2101 |
| Year of construction | 1936 |
| Bedrooms | 2 |
| Toilettes | 2 |
| Concierge | Yes |
| Heating | Gas |
| Condition | Excellent |
| Floor Type | Parquet |

Equipments

Air Conditionning - Fitted Wardrobes - Elevator - Cargo Lift - Heating - Built-In Kitchen - Concierge - Automation - Exterior - Rehabilitation_Integral - City Views

REF: Z-2101



Amit Brown, Tf: +34 656 95 85 49
hola@bcnaddict.com
BCNaddict, C/ Blasco de Garay 26, Local 1 08004 Barcelona

BCN
addict
BOUTIQUE PROPERTIES