

LOVELY NEW-BUILT APARTMENT NEXT TO PARK GÜELL



The new-built residential development is located next to Lesseps Square (Metro links L3 and future L9-10), in the vicinity to Parc Güell, in the neighborhood of Gracia, a multicultural and cosmopolitan district. The architect-designed building is enviably set in the quiet residential hilly part of Gracia district : La Salut, moments from Travessera de Dalt and ring road entry 6 of Ronda de Dalt. This is an ideal area to live with a wide variety of cultural, gastronomic and fantastic places to enjoy a unique local atmosphere. The low-rise building of 2 floors was recently terminated: it boasts a stylish façade with a combination of tiled walls and glass openings. The building has a community roof top with with pool and offers spectacular views over the city and further to the sea and...

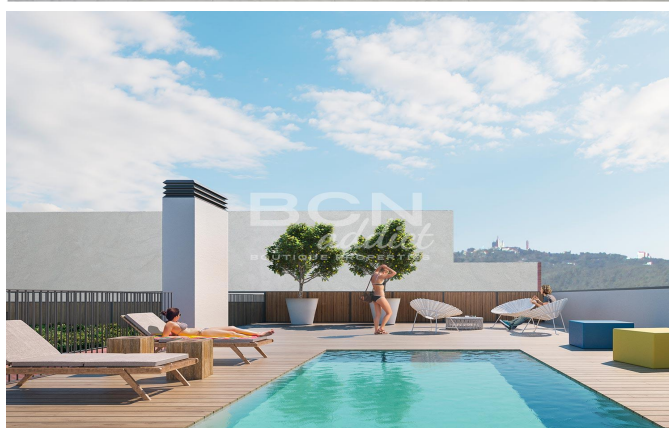
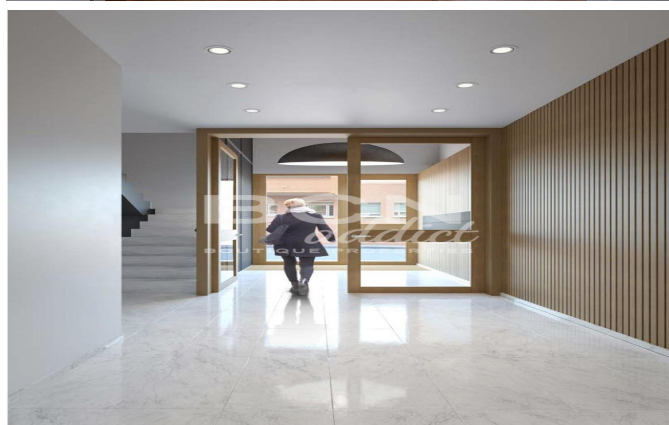
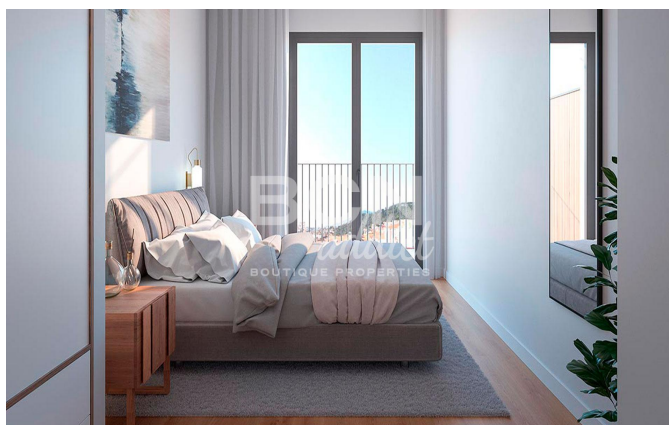
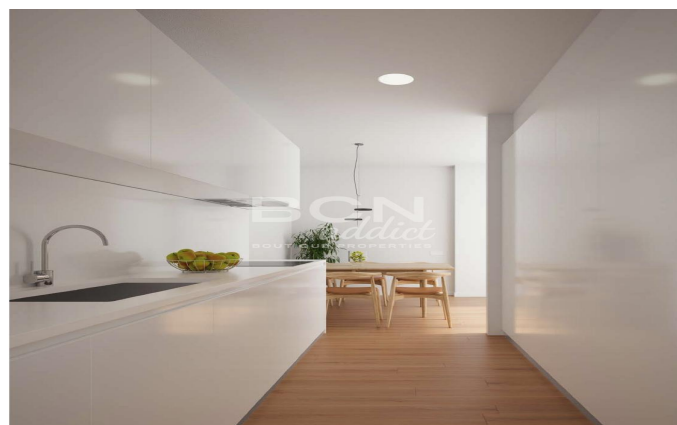
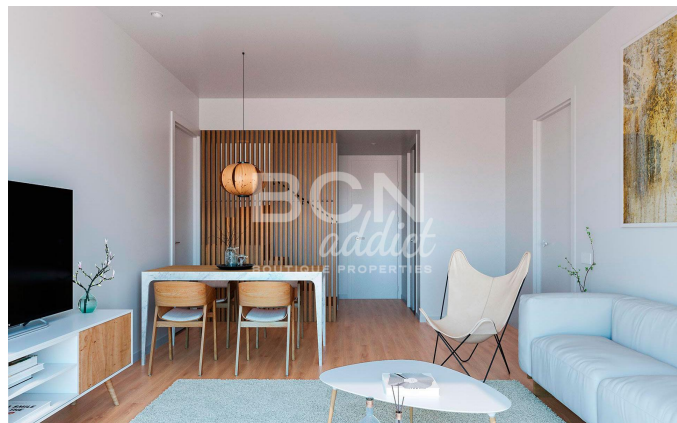
2 Rooms • 67 m² • 345 000 €

REF:	Z-2106-F2
Year of construction	2019
Bedrooms	2
Toilettes	2
Heating	Heat Pump
Condition	Excellent
Floor Type	Mix Wooden - Original

Equipments

Air Conditionning - Security System - Fitted Wardrobes - Heating - Built-In Kitchen - Exterior - City Views

REF: Z-2106-F2



Amit Brown, Tf: +34 656 95 85 49
hola@bcnaddict.com
BCNaddict, C/ Blasco de Garay 26, Local 1 08004 Barcelona

BCN
addict
BOUTIQUE PROPERTIES